

Global Transformation



International research for
sustainable transformation



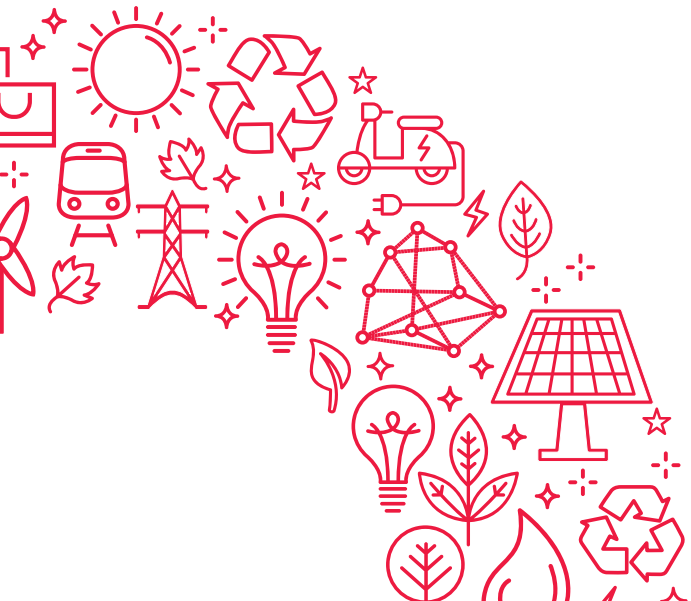
**Wuppertal
Institut**

New knowledge for the global transformation

In order to meet the climate, environmental and societal challenges of this century, international collaboration, knowledge exchange and joint learning processes across borders and between actors are of key importance.

This is particularly true given that transitions to sustainability are context-specific, which requires a clear understanding of national and sub-national characteristics of economies and societies and their transition potentials and capabilities.

The Wuppertal Institute is a leading international think tank for sustainability transformations. At its core is a multi- and transdisciplinary approach and a systemic view of the societal challenges at hand. This makes it uniquely equipped to produce and support the exchange of required system knowledge, target knowledge and transformation knowledge at all levels, from local to global. The Wuppertal Institute calls the integration and interaction of these three different forms of knowledge „Zukunftswissen“.



International research at the Wuppertal Institute

The Wuppertal Institute has been conducting research at the international level for more than 25 years. The Institute's international research activities follow a transformative approach, where researchers work in transdisciplinary and multicultural teams that address global and context-specific sustainability challenges. Being transformative in nature, the Institute's research activities are dedicated to concretely supporting and facilitating transformation processes. In its research projects, the Wuppertal Institute cooperates closely with stakeholders at various levels and incorporates their perspectives and scope for action.

The Institute's focus areas at international level include:

- Energy and industry system transitions
- Global climate governance
- Low-carbon urban transformation
- Mobility
- Sustainable production and consumption
- Circular economy



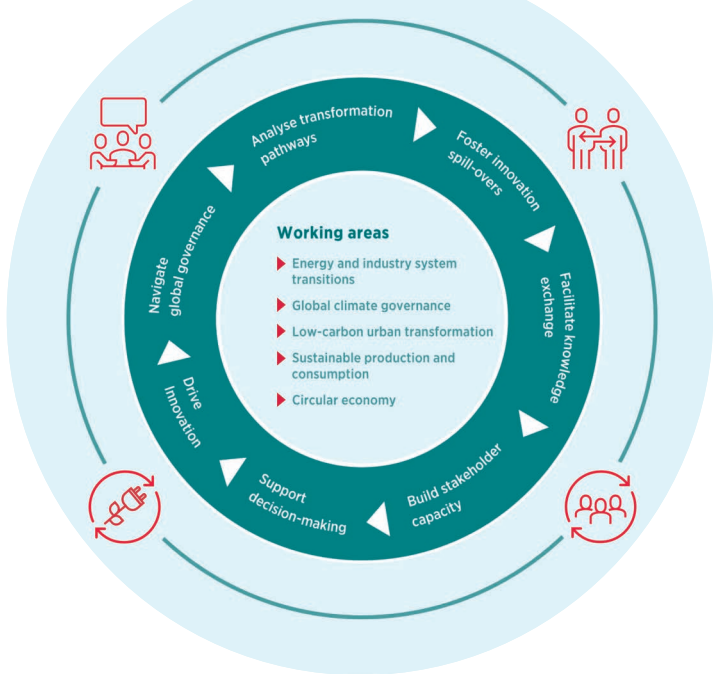
Research topics

The Wuppertal Institute's long-standing international research particularly embraces the following key directions:

- Supporting decision-making by systematically developing strategies and instruments and evaluating their implementation and lessons learned.
- Facilitating knowledge exchange among local communities, cities, regions and countries.
- Engaging in multi-stakeholder processes to analyse enabling frameworks to spur transitions.
- Developing training programmes and knowledge tools to strengthen technical and management capacities.
- Analysing transformation processes in countries around the world, thereby contributing to empirical research on sustainability transformation.
- Understanding and fostering spill-overs from innovations in Germany and abroad.

*The Wuppertal Institute is active
with international projects
inside and outside Europe.*





Clients and funders

The Wuppertal Institute offers its clients a wide range of expertise, services and advice and successfully implements international projects, based on its many years of experience, strong networks and transdisciplinary approach. The Wuppertal Institute's diverse clients include:

- German federal ministries and state agencies
- United Nations
- European Union
- Multilateral development banks
- Non-governmental organisations
- Businesses and their associations
- Municipalities and utilities
- Foundations, associations and institutions

Within the Institute's research projects, the scientists work closely with local partner institutions, who have the necessary cultural background and understanding for a successful implementation.

Contact us



Wuppertal Institut für Klima, Umwelt, Energie gGmbH

Döppersberg 19
42103 Wuppertal · Germany
Tel.: +49 202 2492-0 · Fax: -108
info@wupperinst.org

wupperinst.org

You can also find us here:



Subscribe to newsletter
wupperinst.org/en/newsletter/